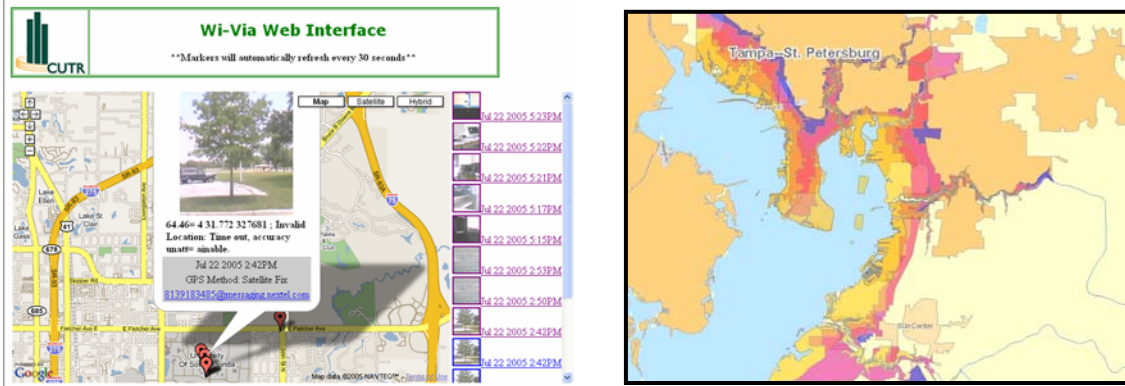




## Additional Graphic Images



### Description of Graphic Images:

The graph on the left shows the user interface of the Wi-Via application. Users reporting events utilize their cellular telephones to send emails with pictures to a central reporting station. Based on the position of the user, the system maps the user in a Google map and presents the email and the picture. The system also allows the officer at the central reporting station to send individual or group messages back to the users.

The graph on the right shows the evacuation zones of the Hillsborough county in Florida. The EZ-finder application utilizes these data and the position of the user to send a text message back with the evacuation zone corresponding to the current location of the user.